

**ALASKA DIVISION OF HOMELAND SECURITY &
EMERGENCY MANAGEMENT**
SITUATION REPORT 24-058 • February 27, 2024



Toll-Free 1.800.478.2337

Anchorage Area 907.428.7000

SEOC 907.428.7100

<p><u>SEOC Preparedness Level</u> Level 1 – Routine Operations.</p>	<p>http://ready.alaska.gov</p>	<p><u>National Terrorism Advisory System:</u> Read the NTAS Bulletin here</p>
<p>Maritime Security (MARSEC) Level:1- Minimum Appropriate Security Measures</p>	<p>WHO Novel Coronavirus Pandemic (COVID-19): 2019 Novel Coronavirus</p>	<p><u>Alaska Military Installation Force Protection Level:</u> FPCON Bravo</p>

(Significant changes from previous situation reports are red.)

Significant Issues:

City of Anderson – Wastewater Collection System

The SEOC is continuing to work with the City of Anderson and Denali Borough on their ongoing response and recovery efforts.

Kotzebue – Frozen Water Lines

SEOC participated in a multi-agency meeting with the City of Kotzebue and the Northwest Arctic Borough. SEOC continues to support and monitor the interagency response and recovery for this event.

Quinhagak Power Outage Disaster

The State Individual Assistance application hotline and website are open for Quinhagak residents at <https://www.ready.alaska.gov/Recovery/IA> or by phone at 1 (844) 445-7131. The deadline to apply for State Individual Assistance is March 2, 2024.

State of Alaska Department of Health (DOH)

The DOH stands ready to assist with all aspects of public health and, in the event of a public health emergency, is supported by the SEOC and other state departments as required.

For current information, see: <https://health.alaska.gov/dph/Pages/default.aspx>
<https://health.alaska.gov/dph/Emergency/Pages/prepared/default.aspx>

NTAS Bulletin

The U.S. Department of Homeland Security issued an updated National Terrorism Advisory Bulletin on May 24, 2023. The current and expired bulletins can be viewed at the below link.

<https://www.dhs.gov/national-terrorism-advisory-system>

Travel Alerts and Conditions

For current driving conditions, dial 511 or visit: <https://511.alaska.gov/>

Barry Arm Landslide / Tsunami Risk

For the latest information on the Barry Arm Landslide and Tsunami risk, click here:

<https://dggs.alaska.gov/hazards/barry-arm-landslide.html>

Earthquakes

United States Geological Service (USGS) Earthquake Information: <http://earthquake.usgs.gov/>

National Tsunami Warning Center: <http://tsunami.gov/>

Alaska Volcanoes

Great Sitkin Alert Level: **Watch** and Aviation Color Code: **Orange**

Kanaga Alert Level **Advisory** and Aviation Color Code: **Yellow**

Shishaldin Alert Level: **Watch** and Aviation Color Code: **Yellow**

Gareloi Alert Level: **Advisory** and Aviation Color: **Yellow**

For Alaska Volcano updates, go to: <https://www.avo.alaska.edu/>

Air Quality Index (AQI) Advisories

For the most up-to-date Air Quality Index Advisories:

<http://dec.alaska.gov/Applications/Air/airtoolsweb/Home/Index>

Spills of Oil and Hazardous Substances

The Alaska Division of Environmental Conservation (ADEC) Spill Prevention and Response page is located at:

<https://dec.alaska.gov/spar/>

Alaska Cyber Security Information

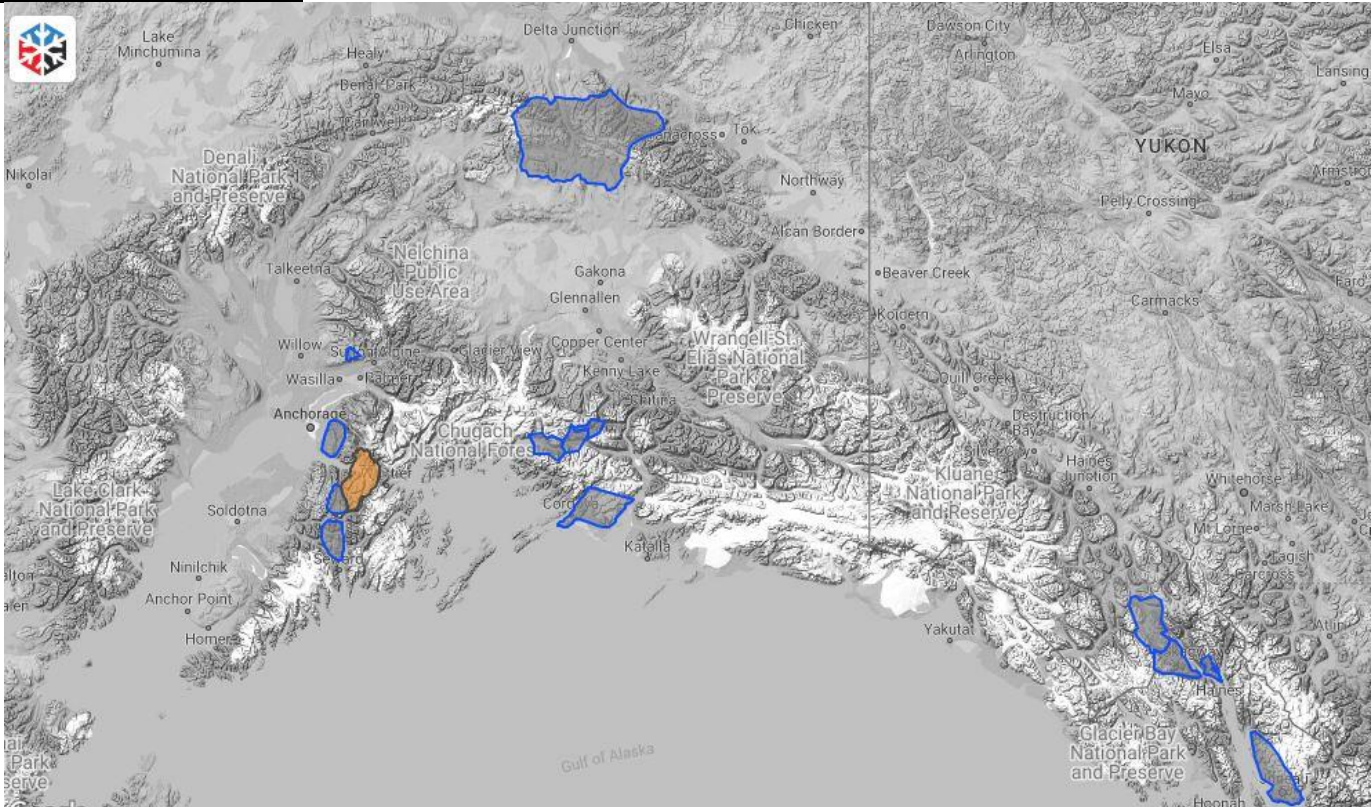
State Employees may sign up for cybersecurity notifications and alerts at

<https://oit.alaska.gov/security>

Cybersecurity and Infrastructure Security Agency (CISA)-Cybersecurity Services and Tools:

www.cisa.gov/free-cybersecurity-services-and-tools

Avalanche Hazards:

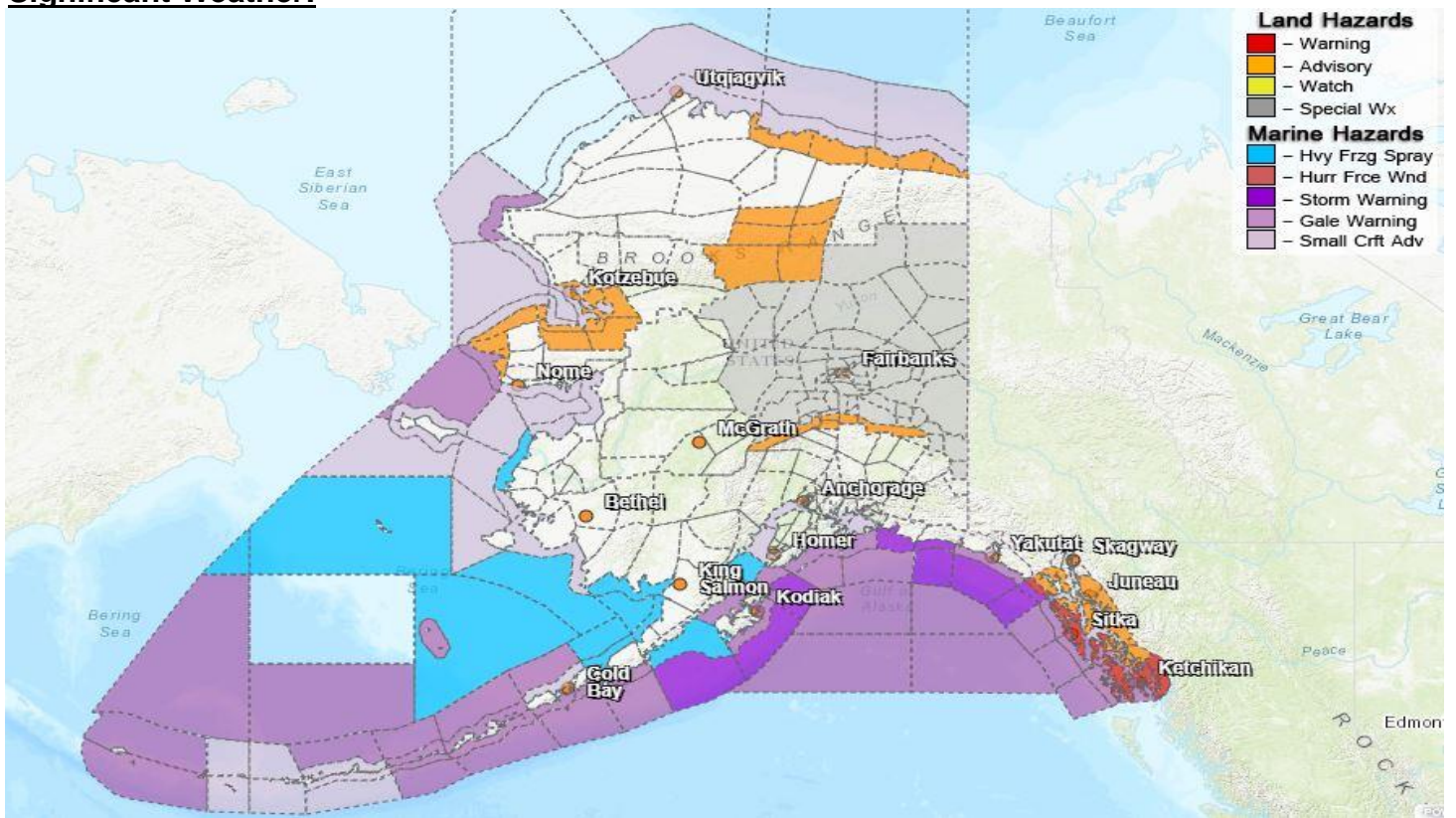


Travel in avalanche terrain is not recommended. Avoid being on or beneath all steep slopes.

Turnagain Pass –CONSIDERABLE above 2,500ft, Moderate 1,000 – 2500 ft, Low below 1,000ft.

For more information and the most current avalanche conditions, go to <https://alaskasnow.org>

Significant Weather:



Winter Storm Warning

- **Cape Fairweather to Lisianski Strait; City and Borough of Sitka; Prince of Wales Island; Western Kupreanof; Ketchikan Gateway Borough; Annette Island and Kuiu Island - In effect until 5am Wednesday.**

Winter Weather Advisory

- **City of Hyder; Glacier Bay; Eastern Chichagof Island; Admiralty Island; City and Borough of Juneau; Petersburg Borough; City and Borough of Wrangell – Until 5am Wednesday.**
- **Eastern Beaufort Sea Coast – Until 6am Thursday.**

Wind Chill Advisory

- **Shishmaref; Bering Strait Coast – Until 3 PM Tuesday.**
- **Lower Kobuk Valley; Baldwin Peninsula; Northern Seward Peninsula; Central Brooks Range - Until 9am Thursday.**
- **Southern Denali Borough; Eastern Alaska Range South of Trims Camp – Until 10am Friday**
- **Central Beaufort Sea Coast – Until 3am Friday**

Special Weather Statement

- **Glacier Bay; Eastern Chichagof Island; Cape Fairweather to Lisianski Strait; Admiralty Island; City and Borough of Juneau - More accumulating into Tuesday night.**
- **South Slopes Of The Eastern Brooks Range; South Slopes Of The Central Brooks Range; Upper Koyukuk Valley; Dalton Highway Summits; Yukon Flats; White Mountains and High Terrain South of the Yukon River; Fortymile Country; Upper Tanana Valley; Delta Junction; Upper Chena River Valley; Tanana Flats; Eielson AFB and Salcha; Goldstream Valley and Nenana Hills; Chatanika River Valley; Two Rivers; Fairbanks Metro Area; Nenana; Central Interior; Northern Denali Borough; Southern Denali Borough; Eastern Alaska Range North of Trims Camp; Eastern Alaska Range South of Trims Camp – Another Arctic Blast upcoming late this week and into the weekend.**

For more information and the most current weather, Watches / Warnings / Advisories go to:

<https://www.weather.gov/arh/>

The Next Situation Report will be **February 28, 2024**. A significant change in the situation or the threat level will prompt an interim report. This report is posted on the internet at

<https://ready.alaska.gov/sitrep>.

To register for email distribution, go to <http://list.state.ak.us/mailman/listinfo/dhsem.situation.report>.

Direct questions regarding this report to the SEOC at 907-428-7100 or seoc@alaska.gov.